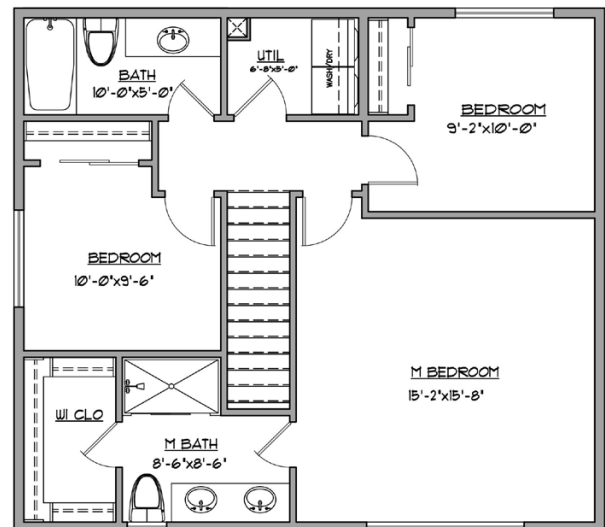
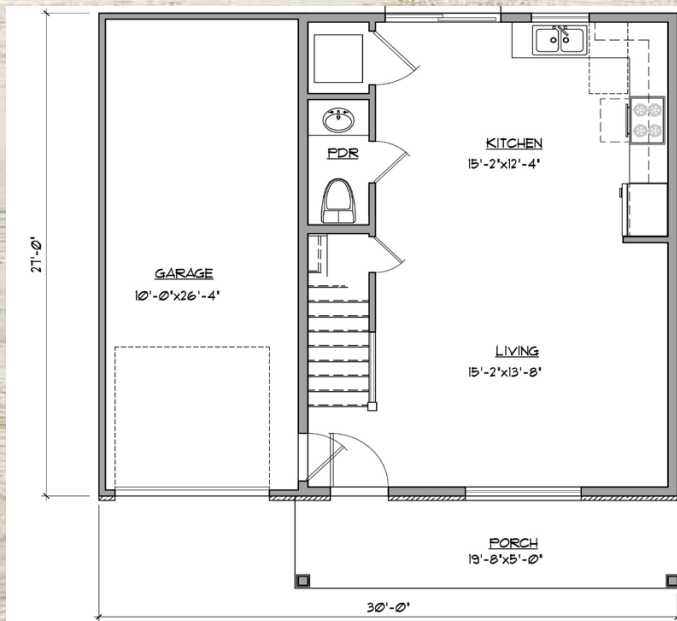




HARVEST GARDENS LOT 19

THE TALBOT PLAN

1305 SQ FT



WWW.FORRESTRIDGEHOMES.COM

Susie Hansen 503-680-9748



Licensed in the State of Washington and Oregon
Web: www.AskSusieQ.com
Email: pdxhomes@hotmail.com

20961 EDEN AVENUE
DONALD, OR 97020
3 BED, 2.5 BATH, 1305 SQFT

ANOTHER QUALITY HOME BUILT BY FORREST RIDGE HOMES.

STANDARD FEATURES INCLUDE: PAINTED SHAKER-STYLE OR STAINED FLAT FRONT CABINETS, WIDE PLANK LAMINATE FLOORS, QUARTZ COUNTERS IN KITCHEN AND BATHROOM,

TANKLESS WATER HEATER, GARAGE DOOR OPENER, WOOD WRAPPED WINDOWS AND WOOD SHELVING IN CLOSETS/PANTRY. HOMES COME FENCED, LANDSCAPED WITH SPRINKLERS FRONT AND BACK.



General Interior Features

- Nine foot ceilings on main
- Custom cabinets
- Laminate hardwood flooring in entry, kitchen, and nook
- Master suite with double sinks and soaking tub (per plan), walk-in closet, and 5 foot shower
- Rounded drywall corners
- Upgraded painting
- Full wood-wrapped windows
- 3/4 TV and data outlets
- Two designer interior color scheme choices
- Advanced framing techniques & floor system (we use 14" i-joist system)
- Overhead garage door with 2 openers
- One Year Builders Warranty

Kitchen Features

- Maytag stainless steel appliances or equivalent
- Quartz counter tops
- Gas range
- Micro hood
- Dishwasher
- Stainless steel kitchen sink
- Kitchen faucet in brushed nickel
- Garbage disposal
- Walk-in pantry (per plan)
- Plumbed for ice-maker

Bathroom Features

- Fiberglass tub/showers
- Glass shower doors in master bath
- Porcelain bathroom sinks
- Chrome faucets

Exterior Features

- Concrete patio (or equivalent)
- Wide selection of exterior colors
- Four panel fiberglass entry door with windows
- Landscaped yards with sprinklers
- 2x6 exterior walls
- Energy efficient Low-E vinyl windows
- Full wrap Hardi fiber cement siding
- 30-year composition roofing
- High performance windows (highly energy efficient)
- Full guttering
- Interior Shut off valve for exterior hose bib's
- Garage door opener with 2 remotes

Energy Efficient Features

- Energy trust home with EPS rating which means cleaner air and lower energy bills!
- Rinnai tankless water heater
- All exterior sheathing waterproofed before siding installation with Enviro-Dri
- Efficient LED lighting throughout
- High efficiency appliances
- Above-code insulation (R-21 Batted insulation in walls, R-49 blown-in attic, R-32 foam crawlspace)
- Sealed duct work

*Plans and renderings are subject to change at anytime

FOR MORE
INFORMATION
CONTACT:



Susie Hansen 503-680-9748



Licensed in the State of Washington and Oregon

Web: www.AskSusieQ.com

Email: pdxhomes@hotmail.com